



ceramiche
campogalliano®

ELEMENTI. ELEN

ELEMENTI. ELEN

Elementi Quadrati Grigio Rett. Lev. cm 60x60 (24"x24")
Elementi Grigio Rett. Lev. cm 7,5x30 (3"x12")

Happy together

Concrete loves being
polished and mixed
with marble.

- * Le béton aime être **poli** et mélangé avec du **marbre**.
- * Beton liebt es, **poliert** und mit **Marmor** gemischt zu werden.

elementi.



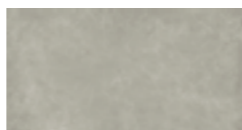
Elementi Grigio
100X100 cm (40"x40")
Rett. / Rett. Lev.



Elementi Grigio
60X60 cm (24"x24")
Rett. / Rett. Lev.



Elementi Quadrati Grigio
60X60 cm (24"x24")
Rett. Lev.



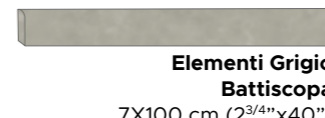
Elementi Grigio
30X60 cm (12"x24")
Rett. / Rett. Lev.



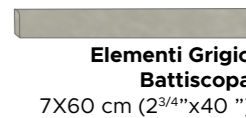
Elementi Grigio Mosaico
5X5 cm (2"x2")
30x30 cm (12"x12")
Rett. / Rett. Lev.



Elementi Grigio
7,5X30 cm (3"x12")
Rett. / Rett. Lev.



Elementi Grigio Battiscopa
7X100 cm (2^{3/4}"x40")
Rett. / Rett. Lev.



Elementi Grigio Battiscopa
7X60 cm (2^{3/4}"x40")
Rett. / Rett. Lev.



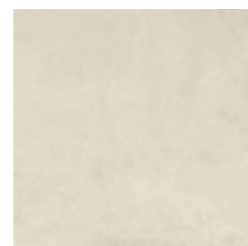
Elementi Bianco
 100X100 cm (40"x40")
 Rett. / Rett. Lev.



Elementi Quadrati Bianco/Bianco
 100x100 cm (40"x40")
 Rett. Lev.



Elementi Quadrati Bianco/Nero
 100x100 cm (40"x40")
 Rett. Lev.



Elementi Bianco
 60X60 cm (24"x24")
 Rett. / Rett. Lev.



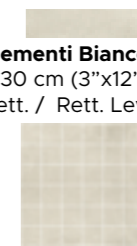
Elementi Quadrati Bianco/Bianco
 60X60 cm (24"x24")
 Rett. Lev.



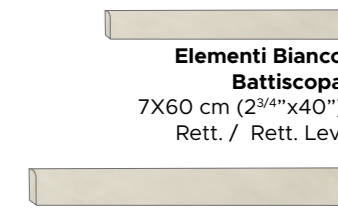
Elementi Quadrati Bianco/Nero
 60X60 cm (24"x24")
 Rett. Lev.



Elementi Bianco
 30X60 cm (12"x24")
 Rett. / Rett. Lev.



Elementi Bianco Mosaico
 5X5 cm (2"x2")
 30x30 cm (12"x12")
 Rett. / Rett. Lev.



Elementi Bianco Battiscopa
 7X60 cm (2³/₄"x40")
 Rett. / Rett. Lev.



Elementi Quadrati Bianco/Bianco Rett. Lev. cm 100x100 (40"x40")



Elementi Quadrati Bianco/Bianco
100x100 cm (40"x40")
Rett. Lev.



Elementi Quadrati
Bianco/Bianco
60X60 cm (24"x24")
Rett. Lev.

Quadrati Bianco/ bianco.

elementi



Elementi Quadrati Bianco /Nero Rett. Lev. cm 100x100 (40"x40")

Quadrati Bianco/ nero.



Elementi Quadrati
Bianco/Nero
60X60 cm (24"x24")
Rett. Lev.



Elementi Quadrati Bianco/Nero
100x100 cm (40"x40")
Rett. Lev.



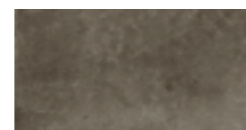
Elementi Fango
100X100 cm (40"x40")
Rett. / Rett. Lev.



Elementi Fango
60X60 cm (24"x24")
Rett. / Rett. Lev.



Elementi Quadrati Fango
60X60 cm (24"x24")
Rett. Lev.



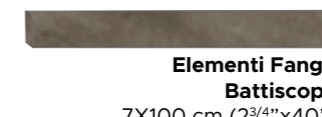
Elementi Fango
30X60 cm (12"x24")
Rett. / Rett. Lev.



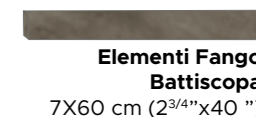
Elementi Fango Mosaico
5X5 cm (2"x2")
30x30 cm (12"x12")
Rett. / Rett. Lev.



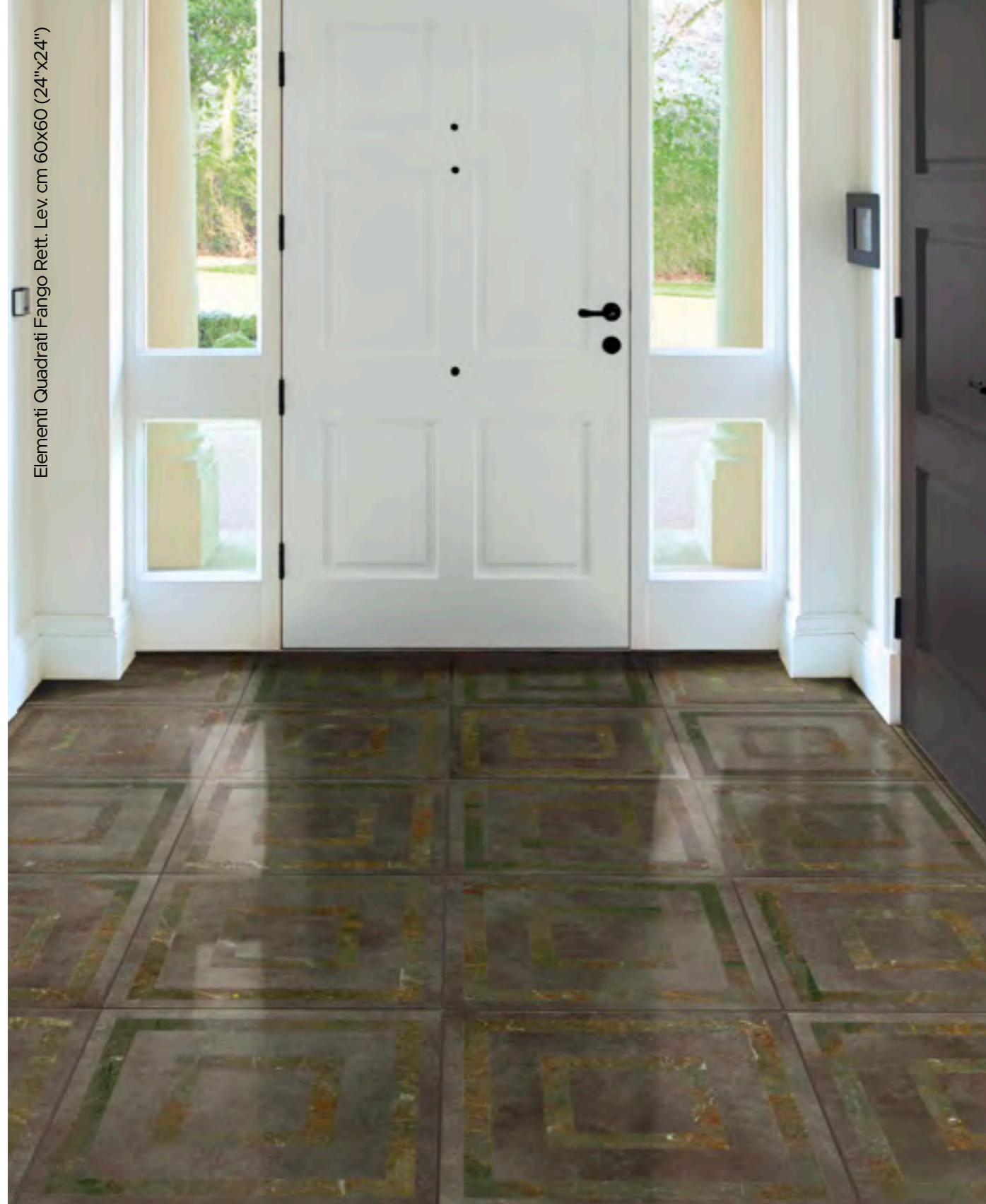
Elementi Fango
7,5X30 cm (3"x12")
Rett. / Rett. Lev.



Elementi Fango Battiscopa
7X100 cm (2^{3/4}"x40")
Rett. / Rett. Lev.



Elementi Fango Battiscopa
7X60 cm (2^{3/4}"x40")
Rett. / Rett. Lev.



Elementi Quadrati Fango Rett. Lev. cm 60x60 (24"x24")



Elementi Quadrati Fango
60X60 cm (24"x24")
Rett. Lev.

elementi

Quadrati Fango.



Elementi Quadrati Corda Rett. Lev. cm 60x60 (24"x24")



Elementi Quadrati Corda
60X60 cm (24"x24")
Rett. Lev.

Quadrati Corda.

Elementi Corda Rett. cm 60x60 (24"x24")
 Elementi Corda Rett. cm 7,5x30 (3"x12")



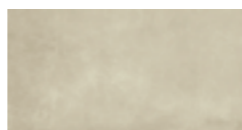
Elementi Corda
 100X100 cm (40"x40")
 Rett. / Rett. Lev.



Elementi Corda
 60X60 cm (24"x24")
 Rett. / Rett. Lev.



Elementi Quadrati Corda
 60X60 cm (24"x24")
 Rett. Lev.



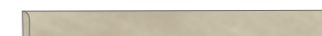
Elementi Corda
 30X60 cm (12"x24")
 Rett. / Rett. Lev.



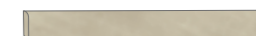
Elementi Corda Mosaico
 5X5 cm (2"x2")
 30x30 cm (12"x12")
 Rett. / Rett. Lev.



Elementi Corda
 7,5X30 cm (3"x12")
 Rett. / Rett. Lev.



Elementi Corda Battiscopa
 7X100 cm (2^{3/4}"x40")
 Rett. / Rett. Lev.



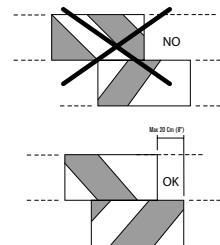
Elementi Corda Battiscopa
 7X60 cm (2^{3/4}"x40")
 Rett. / Rett. Lev.

Caratteristiche Tecniche • Technical features • Technische eigenschaften*

Gres porcellanato impasto colorato - Coloured body porcelain stoneware - Durchgefarbtes feinsteinzeug - GL/UGL

	NORME TEST N°	DESCRIZIONE DESCRIPTION	VALORE A NORMA REQUIRED STANDARD	VALORE - MATT RESULTS - MATT UGL	VALORE - LEV RESULTS - LEV GL
	ISO 10545/3	ASSORBIMENTO D'ACQUA - WATER ABSORPTION ABSORPTION D'EAU - WASSERAUFNAHME	≤ 0,5%	CONFORME CONFORMS	CONFORME CONFORMS
	ISO 10545/4	RESISTENZA ALLA FLESSIONE - BENDING STRENGTH RESISTANCE A LA FLEXION - BIEGFESTIGKEIT	R ≥ 35 N/mm ²	CONFORME CONFORMS	CONFORME CONFORMS
	ISO 10545/8	COEFFICIENTE DI DILATAZIONE TERMICA LINEARE THERMAL EXPANSION COEFF. BETWEEN 20°C - 100°C COEFF. DE DILATATION THERMIQUE LINEAIRE ENTRE 20°C ET 100°C WÄRMEAUSSDEHNUNG ZWISCHEN 20°C UND 100°C	≤ 9x10 ⁻⁶	9x10 ⁻⁶	9x10 ⁻⁶
	ISO 10545/9	RESISTENZA AGLI SBALZI TERMICI - RESISTANCE TO THERMAL SHOCK RESISTANCE AUX CHOCs THERMIQUES TEMPERATURWECHSELBESTÄNDIGKEIT		RESISTE - RESISTANT RÉSISTE - BESTÄNDIG	RESISTE - RESISTANT RÉSISTE - BESTÄNDIG
	ISO 10545/11	RESISTENZA AL CAVILLO - CRAZING RESISTANCE RESISTANCE AU TRASSAILAGE - HAARRISSFESTIGKEIT		RESISTE - RESISTANT RÉSISTE - BESTÄNDIG	RESISTE - RESISTANT RÉSISTE - BESTÄNDIG
	ISO 10545/14	RESISTENZA ALLE MACCHIE - STAIN RESISTANCE RESISTANCE AUX TACHES - FLECKENFESTIGKEIT	min. Classe 3	CONFORME CONFORMS	CONFORME CONFORMS
	ISO 10545/13	RESISTENZA ALLATTACCO CHIMICO - CHEMICAL RESISTANCE RESISTANCE À L'ATTACQUE CHIMIQUE - FÄHIG GEGEN SÄUREN	min. GB	CONFORME CONFORMS	CONFORME CONFORMS
	ISO 10545/2	LUNGHEZZA E LARGHEZZA - LENGTH AND WIDTH LONGUEUR ET LARGEUR - LÄNGE UND BREITE	± 0,5%	CONFORME CONFORMS	CONFORME CONFORMS
	ISO 10545/2	SPESSORE - THICKNESS ÉPAISSEUR - STÄRKE	± 5%	CONFORME CONFORMS	CONFORME CONFORMS
	ISO 10545/2	ORTOGONALITÀ - WEDGING ORTHOGONALITÉ - RECHTWINKLICHKEIT	± 0,6%	CONFORME CONFORMS	CONFORME CONFORMS
	ISO 10545/2	PLANARITÀ - WARPAGE PLANÉITÉ - EBENFLÄCHIGKEIT	± 0,5%	CONFORME CONFORMS	CONFORME CONFORMS
	ISO 10545/12	RESISTENZA AL GELO - FROST RESISTANCE RESISTANCE AU GEL - FROSTBESTÄNDIGKEIT		RESISTE - RESISTANT RÉSISTE - BESTÄNDIG	RESISTE - RESISTANT RÉSISTE - BESTÄNDIG
	ISO 10545/6	RESISTENZA ALLABRASIONE PROFONDA - DEEP ABRASION RESISTANCE RESISTENCE À L'ABRASION PROFONDE - TIEFENVERSCHLEISSBESTÄNDIGKEIT	< 175 mm ³	CONFORME CONFORMS	
	ISO 10545/7	RESISTENZA ALLABRASIONE - ABRASION RESISTANCE RESISTENCE À L'ABRASION - ABRIEB			BIANCO - CORDA - GRIGIO: IV FANGO: III
	BOT 3000 WET DCOF	RESISTENZA ALLO SCIOLAMENTO SLIP RESISTANCE - RESISTANCE AU GLISSEMENT BESTIMMUNG DER RUTSCHEMME EIGENSCHAFT	≥ 0,42	Tile 1 : 0,50 Tile 2 : 0,49 Tile 3 : 0,50	
	DIN 51130 R			R10	
	DIN 51097 A+B+C			A+B	

*These test results may change from lot to lot



SOLUZIONI DI POSA

cm 30x60 - 12"x24"
Per una corretta realizzazione si consiglia di posare i formati lunghezza 60 cm, sfalsati a correre di massimo 20 cm o posa pari

INSTALLATION INFORMATION

cm 30x60 - 12"x24"
For 60 cm (24") long tiles, staggering should not exceed 20 cm (8")

VERLEGEBEISPIELE

cm 30x60 - 12"x24"
Für eine korrekten und einwandfreien Belag, die Formaten mit 60 cm Länge sollten bei der Verlegung maximal 20 cm versetzt sein.

SOLUTIONS DE POSE

cm 30x60 - 12"x24"
Pour une réalisation correcte nous conseillons de poser le format en 60 de longueur, au maximum à un tiers/deux tiers.

Noi consigliamo fortemente l'uso di un sistema di posa con distanziatori autoivelanti.

Wir empfehlen dringend die Verwendung von einem Befestigungssystem mit leveling system.

We strongly recommend using a tile edge leveling system during installation.

Il est vivement recommandé l'utilisation d'un système de pose avec des croisillons auto nivelant.

SHADE VARIATION



SLIGHT/MODERATE
Product with slight to moderate color variation

IMBALLI PACKAGING

	UNITÀ DI MISURA UNIT OF MEASUREMENT	PZ/SCATOLA PCS/BOX	KG/SCATOLA KG/BOX	M ² /SCATOLA M ² /BOX	SCATOLA/PAL BOXES/PAL	M ² /PAL	KG/PAL	SPESSORE THICKNESS	
Elementi Rett. / Lev.	100x100 (40"x40")	M ²	1	20,96	1,00	42	42,00	880,32	8,5
Elementi Rett. / Lev.	60x60 (24"x24")	M ²	3	20,42	1,08	48	51,84	980,16	8,5
Elementi Rett. / Lev.	30x60 (12"x24")	M ²	7	24,30	1,26	40	50,40	972,00	8,5
Elementi Rett. / Lev.	7,5x30 (3"x12")	M ²	17	7,23	0,38	84	31,92	607,32	8,5
Elementi Mosaico 5x5 (2"x2")	30x30 (12"x12")	FOGLIO/SHEET	8	13,88	-	42	-	582,96	8,5
Elementi Battiscopa	7x100 (2 ³ / ₄ "x40")	PZ	6	8,64	-	42	-	362,88	8,5
Elementi Battiscopa	7x60 (2 ³ / ₄ "x24")	PZ	15	14,00	-	40	-	560,00	8,5

ceramiche
campogalliano®

info@ceramichecampogalliano.it
www.ceramichecampogalliano.it
tel +39 0536 832393
fax +39 0536 913591



Ceramics of Italy

verde
1999®
a brand of ITALIAN CERAMICS

Verde 1999 srl - Via Ghiarola Nuova, 158
41042 Fiorano Modenese, MO Italy
tel +39 0536 832393 - fax +39 0536 913591
www.verde1999.com - info@verde1999.com

made in Italy
100%